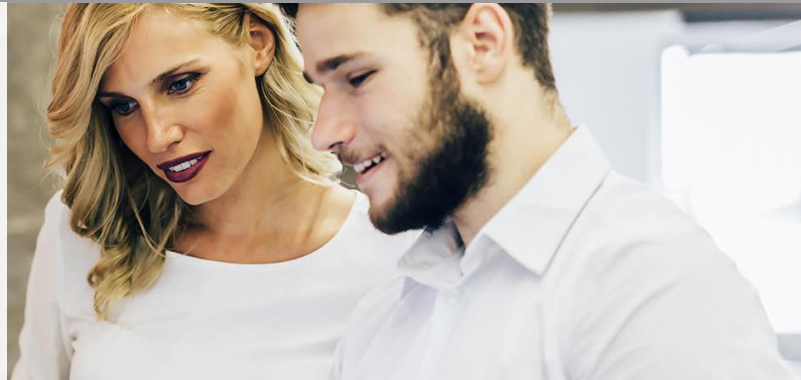


INTRODUCTION TO SOCIOLOGY

- ✓ Online study
- ✓ Optional printed materials (fees apply)
- ✓ 25 hours course time
- ✓ Unlimited access



COURSE OVERVIEW

Sociology has practical applications for many industries and occupations. The study of society and human behaviour is particularly important for organisations and managers to respond to customer and employee needs and problems.

The Introduction to Sociology is an online professional development course that will introduce you to the sociological perspective and the way sociologists approach and study the social world. You will explore major theoretical perspectives and concepts including socialisation, culture, deviance, inequality, social change and social structure. You will also discover the influence of social class and social institutions, such as churches, education, healthcare, government, economy and environment.

On completion of this sociology course, you will have a comprehensive understanding of the major theoretical perspectives and concepts of sociology and how they impact individuals, groups and organisations.

UNIT STRUCTURE

Unit: Sociology

Please view the [course outline online](#) for a list of topics covered in each unit.

ASSESSMENT

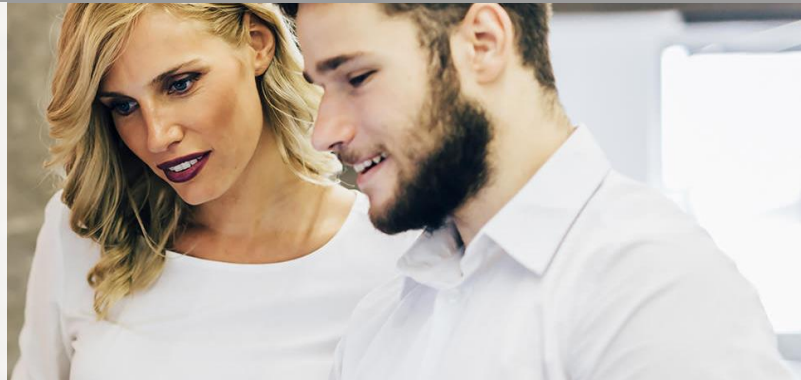
Written assignments and exercises, including short-answer questions, reports/essays and projects. There are no examinations or due dates

COURSE FEES

To view the course fees and payment options for this program, please [click here](#).

INTRODUCTION TO SOCIOLOGY

- ☑ Online study
- ☑ Optional printed materials (fees apply)
- ☑ 25 hours course time
- ☑ Unlimited access



BENEFITS

- Become fully trained and improve your employment opportunities;
- Recognised by employers as professional development;
- Study online, anywhere via our elearning system;
- Access to high-quality courses written by industry experts;
- Interactive simulations for many programs;
- All course materials provided online – no textbooks to buy;
- 7 day administrative, tutor and technical support;
- Easy to understand course content;
- Unlimited enrolment with no expiry;
- Certificate issued for your CV (hard copy provided);
- Tax deductible in most cases* See your tax advisor.

HOW TO ENROL

Enrolment Process

The AOC website offers course outlines, units, course fees and other information. Select your course and click Add to Cart. Finalise your payment and receive access within 2-24 hours.

PAYMENT OPTIONS

Credit card, BPAY and Internet Banking. We accept purchase orders for enrolments from corporate clients and government departments.

ENROL NOW

To view the course outline and enrol, please [click here](#).